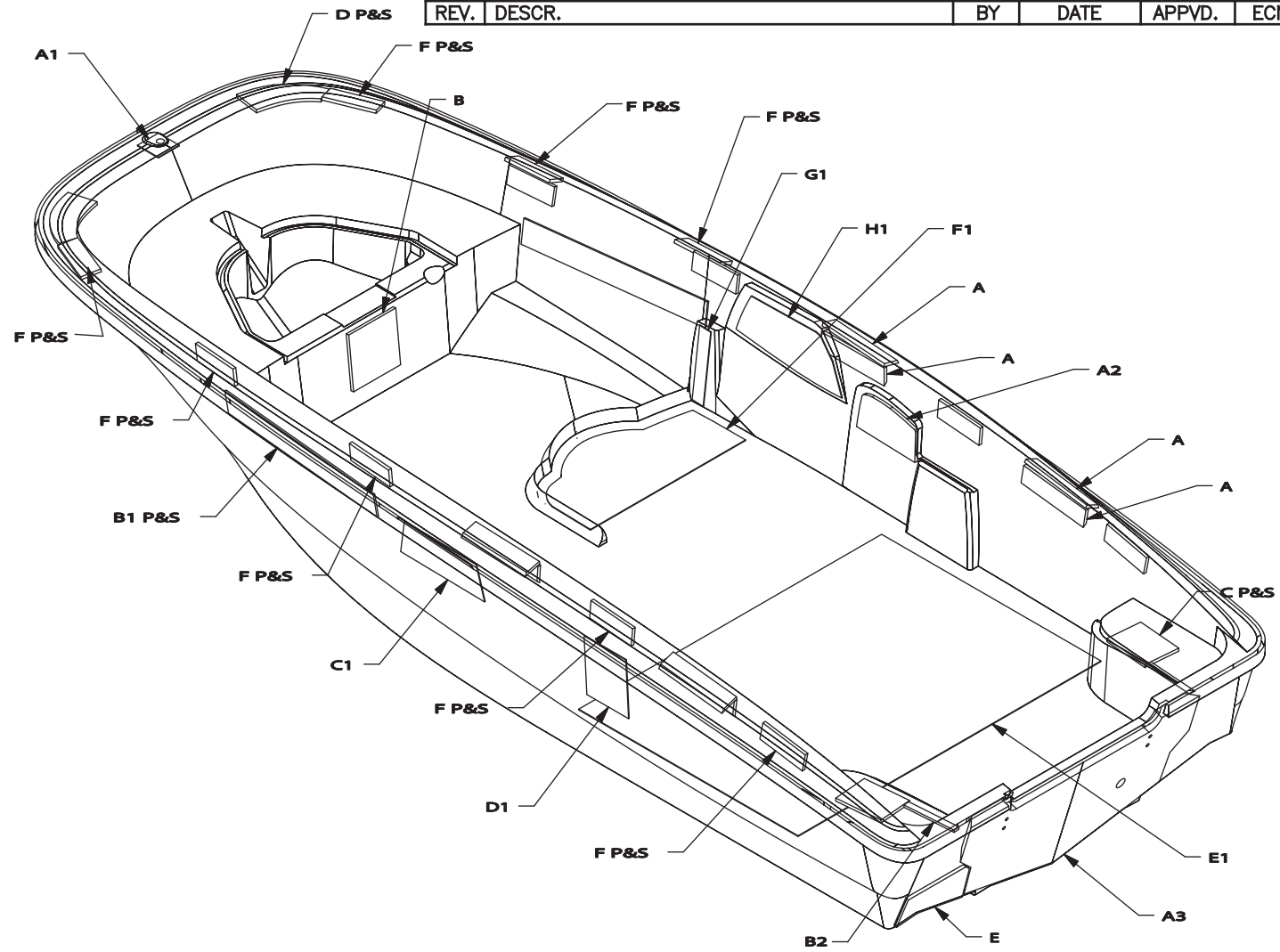


THIS DOCUMENT IS THE PROPERTY OF BOSTON WHALER, INC. MFG. DEPT., EDGEWATER, FLORIDA. ALL RIGHTS ARE RESERVED. THIS DOCUMENT AND INFORMATION CONTAINED MUST NOT BE COPIED OR DISCLOSED TO OTHERS WITHOUT WRITTEN PERMISSION OF BOSTON WHALER, INC.

DWG. NO:	REV.	CURRENT ECD
	—	

REVISIONS					
REV.	DESCR.	BY	DATE	APPVD.	ECN NO.



- A 1/2" PHENOLIC 3X12
- B 1/2" PHENOLIC 9X9
- C 1/2" PHENOLIC 6X8
- D 1/2" PHENOLIC 7X13
- E 1/2" PHENOLIC 7X12
- F 3/8" PHENOLIC 3X8

- A1 3MM TRIVERA 4X4
- B1 3MM TRIVERA 4X32
- C1 3MM TRIVERA 6X16
- D1 3MM TRIVERA 8X10
- E1 3MM TRIVERA 42X58
- F1 3MM TRIVERA 15X30
- G1 3MM TRIVERA 2X13
- H1 3MM TRIVERA 8X20

A2 1/2" PENSKE 8X12

B2 1/2" PENSKE 1X9

A3 1.5 PLY 20X42

INTERPRET DIMENSIONS AND TOLERANCES PER ANSI Y 14.5 UNLESS OTHERWISE SPECIFIED DIMENSIONS ARE IN INCHES.
 TOLERANCES: ANGLES = ± .5° .XXX = ± .010
 .X = ± .1 X = ± 1/16
 .XX = ± .03 X = ± 1/16
 DO NOT SCALE DRAWING



CHECKED:	DATE:	DRAWN: B.HUTCHINSON	DATE: 06/24/09	SCALE: NONE	BOAT MODEL	MOLD NO.
APPD:	DATE:	DWG. TITLE:	DIAGRAM, REINF. LOCN. 150SS		150SS	
DESIGN:	DATE:			INIT. REL. ECN NO:	DWG. NO:	SHT. NO.
INT. ENG:	DATE:					1 OF 1